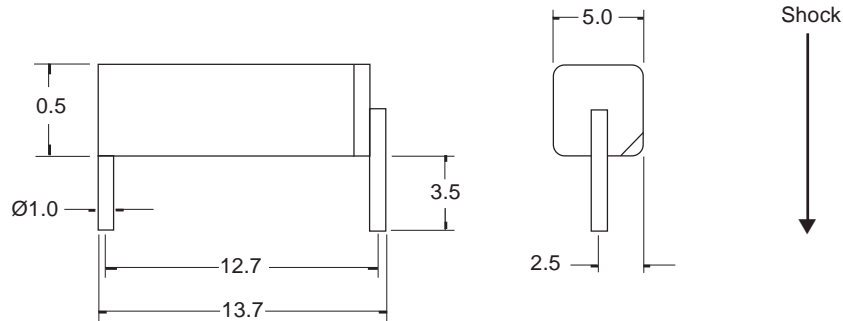


PRODUCT DATA SHEET

Movement Sensor - Non Mercury

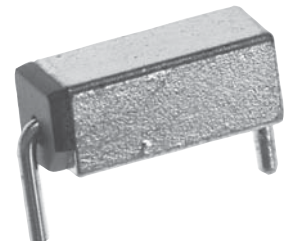
VBS 010200



Drawings not to scale
All dimensions in mm nominal

SPECIFICATION

CONTACT FORM / STYLE		Normally Open
SWITCHING LEVEL	Max. Vdc	Shock
OPERATING TEMPERATURE	Deg. °C	-25° +70°
STORAGE TEMPERATURE	Deg. °C	-40° +85°
CASE MATERIAL		Zinc Alloy G.F. Polyamide UL94V-0
TERMINATION		Copper Alloy, gold plated pins
FEATURES		Detects shock at right angle to switch body



Will detect contact closure or contact change sufficient to trigger an I.C.
Suitable for alarm and non-hazardous applications.
All switches use a gold plated contact ball and gold plated terminals for improved life and stability.

Rev. No.	Revision Note	Date
A	Web Site 2002	1-3-02

As part of the company policy of continued product improvement, specifications may change without notice. Our sales office will be pleased to help you with the latest information on this product range and details of our full design and manufacturing service. All products are supplied to our standard conditions of sale otherwise agreed in writing.

©2002
Active Switch & Sensor Limited